



AWARD-WINNING SAFETY.

PPM doesn't just talk about safety. We win awards for it.

- » Global Pulp and Paper Manufacturer
 - Two million safe work hours without a lost-time injury
- » Southeast Power Producer
 - Two Triangle Safety Excellence Awards
- » North Carolina Chemical Processing Facility
 - Four years without a recordable injury
- » U.S. Pulp & Paper Manufacturer
 - Ten years without a recordable injury
- » PPM Company Record
 - 5,000,000 safe man-hours without a lost-time injury (October 2011–June 2014)
- » Southeast Fine Paper Manufacturer
 - 3,000,000 safe work hours without a lost-time injury
- » Southeast Power Plant
 - 3,000,000 safe work hours without a lost-time injury

Maximum Facility Performance. Extreme Equipment Stability.

For close to four decades, PPM has been providing clients with innovative industrial mechanical, electrical, and civil construction services. The knowledge our expert technicians have gained from providing decades of plant facilities services gives us the ability to help advise clients on a number of plant maintenance and plant profitability issues.

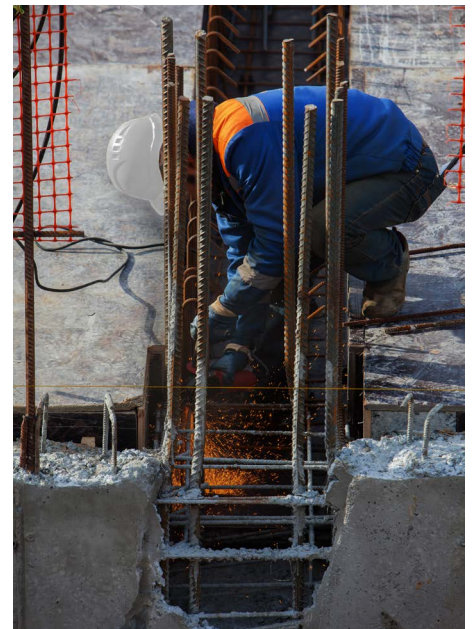
We offer a comprehensive list of civil construction services. With an extensive workforce and solid financial resources at its disposal, PPM can self-perform a complete range of civil and concrete core functions, including foundations, underground piping installation, and masonry. We can also perform demolition, retrofitting, and excavation services.

Less Time. Higher Standards.

PPM offers civil construction management services designed to lessen the time clients spend managing multiple contracts and numerous vendors. Through consistently high quality standards, we help ensure budgets and timeline are maintained.

Civil Construction Services. Second to None.

- » Demolition of existing foundations
- » Retrofitting existing foundations to fit new equipment
- » Reinforcing older building foundations
- » Excavation and compaction
- » Underground utilities
- » Engineered form systems
- » Rebar installation
- » Complex reinforced cast-in-place foundations
- » Precision anchor bolt and embed placement
- » Reinforced slab-on-grade placement and finish





**HUNDREDS OF PROJECTS.
TEN MAJOR MARKETS SERVED.**

- » Pulp and paper
- » Chemical
- » Power generation
- » Mining
- » Food processing
- » General manufacturing
- » Heavy industrial
- » Petrochemical
- » Pharmaceutical
- » Tire manufacturing



What Can We Do for You?

PPM, Inc., 1127 South Main Street, Society Hill, SC 29593
www.morppm.com emcor_info@emcor.net 843.378.4700