



### AWARD-WINNING SAFETY.

PPM doesn't just talk about safety. We win awards for it.

- » Global Pulp and Paper Manufacturer
  - Two million safe work hours without a lost-time injury
- » Southeast Power Producer
  - Two Triangle Safety Excellence Awards
- » North Carolina Chemical Processing Facility
  - Four years without a recordable injury
- » U.S. Pulp & Paper Manufacturer
  - Ten years without a recordable injury
- » PPM Company Record
  - 5,000,000 safe man-hours without a lost-time injury (October 2011–June 2014)
- » Southeast Fine Paper Manufacturer
  - 3,000,000 safe work hours without a lost-time injury
- » Southeast Power Plant
  - 3,000,000 safe work hours without a lost-time injury

## Superior Services. For Nearly Every Electrical Need.

For close to four decades, PPM has been providing clients with innovative industrial mechanical, electrical, and civil construction services. The knowledge our expert technicians have gained from providing decades of plant facilities services gives us the ability to help advise clients on a number of plant maintenance and plant profitability issues.

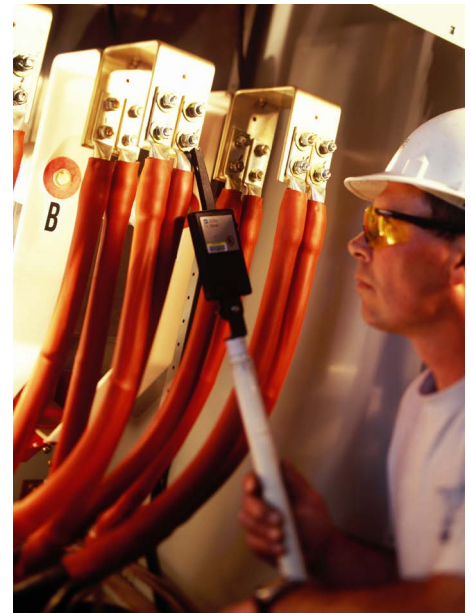
As one of the country's most experienced electrical contractors, PPM is well positioned to help customers with nearly any industrial electrical situation that arises. PPM's industrial electrical contractors provide services related to electrical construction, industrial instrumentation, and control systems installation. Our vast assortment of electrical services spans a range of power plant and manufacturing industries, including pulp and paper facilities, power generation, petrochemical, food processing, pharmaceutical, and heavy industrial plants.

### Complex Projects. Simple Solutions.

PPM is frequently the industrial electrical contractor of choice for demanding and complex design/build and installation projects. We have completed several high-profile power generation projects for utilities companies and manufacturers of generating equipment. PPM enjoys longstanding relationships with many national and international industrial clients.

### Highly Skilled. Highly Technical.

In addition to from-the-ground-up construction, our highly skilled construction management and technical teams perform yearly facilities electrical maintenance and expansion projects, critical path turn-arounds, emergency response, and staff augmentation services. We also perform electrical design and install industrial fiber optics and copper cabling for voice/data, process control, and video systems.



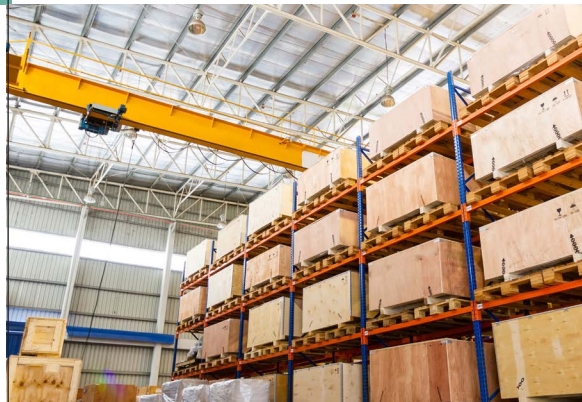
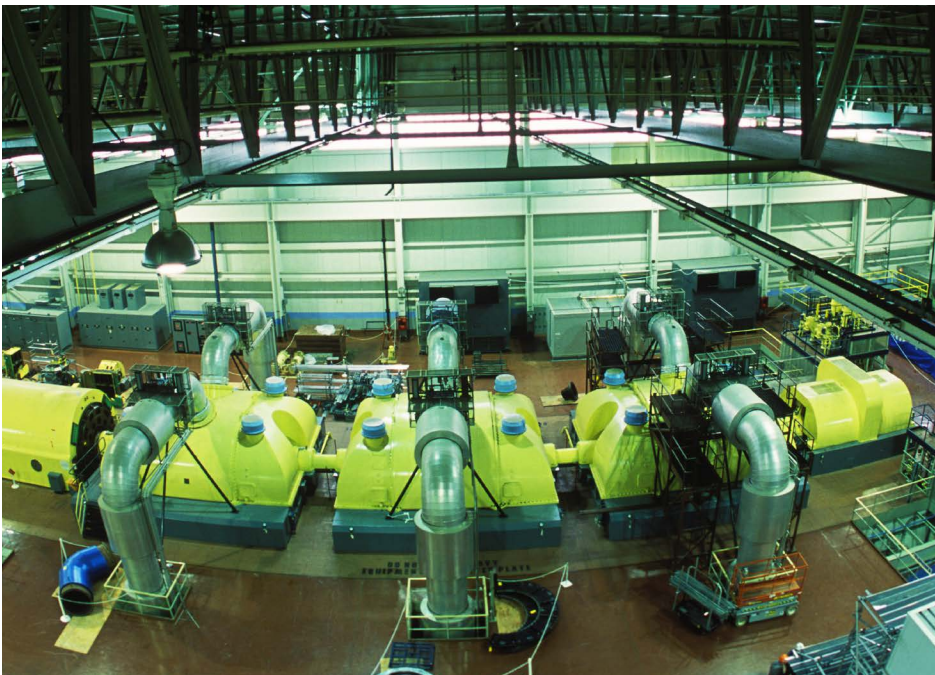
### Electrical Services. Second to None.

- » System installation
- » System maintenance
- » Calibration
- » Wiring
- » Preventive maintenance
- » Loop check
- » Commissioning services
- » Start-up support
- » Configuration planning and scheduling
- » Troubleshooting



### HUNDREDS OF PROJECTS. TEN MAJOR MARKETS SERVED.

- » Pulp and paper
- » Chemical
- » Power generation
- » Mining
- » Food processing
- » General manufacturing
- » Heavy industrial
- » Petrochemical
- » Pharmaceutical
- » Tire manufacturing



### What Can We Do for You?

PPM, Inc., 1127 South Main Street, Society Hill, SC 29593  
[www.morppm.com](http://www.morppm.com)    [emcor\\_info@emcor.net](mailto:emcor_info@emcor.net)    843.378.4700