



### AWARD-WINNING SAFETY.

PPM doesn't just talk about safety. We win awards for it.

- » Global Pulp and Paper Manufacturer
  - Two million safe work hours without a lost-time injury
- » Southeast Power Producer
  - Two Triangle Safety Excellence Awards
- » North Carolina Chemical Processing Facility
  - Four years without a recordable injury
- » U.S. Pulp & Paper Manufacturer
  - Ten years without a recordable injury
- » PPM Company Record
  - 5,000,000 safe man-hours without a lost-time injury (October 2011–June 2014)
- » Southeast Fine Paper Manufacturer
  - 3,000,000 safe work hours without a lost-time injury
- » Southeast Power Plant
  - 3,000,000 safe work hours without a lost-time injury

## Large Projects. Small Projects. And Anything in Between.

For close to four decades, PPM has been providing clients with innovative industrial mechanical, electrical, and civil construction services. The knowledge our expert technicians have gained from providing decades of plant facilities services gives us the ability to help advise clients on a number of plant maintenance and plant profitability issues.

As a single-source industrial mechanical, electrical, and civil construction service provider, PPM has the project-control systems in place to perform construction projects ranging from small capital improvements to major plant expansions. Our industrial plant maintenance and construction service teams help customers resolve and address issues related to industrial mechanical construction services, electrical construction, structural construction, and civil construction engineering services.

### Single Source. Single Point of Contact.

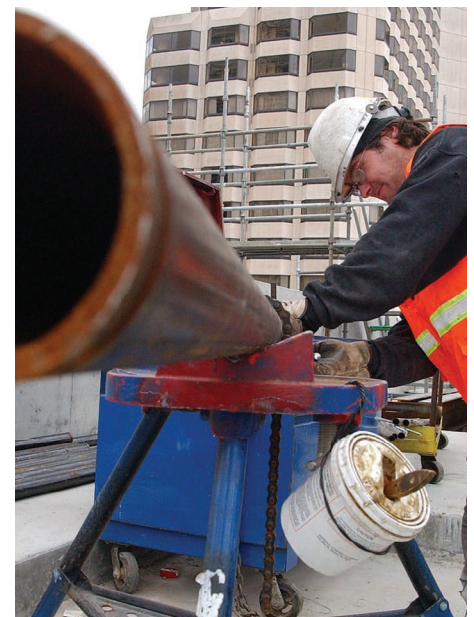
By not only providing all crafts workers but also satisfying all engineering disciplines, PPM provides a single-source industrial mechanical, electrical, and civil design and construction solution that can help lower the total cost of ownership and streamline construction coordination while providing a single point of contact for managing projects.

### Set up for Success. Right from the Start.

Productivity and planning go hand-in-hand, which is why we have initiatives in place to determine what each customer's construction project needs to succeed before it begins. From workforce to work production to work scheduling, PPM can help provide a customer-specific solution that anticipates tasks such as prefabrication, purchasing, and material handling.

### Capital Construction Capabilities. Second to None.

- » Civil
- » Electrical and instrumentation installation and construction
- » Structural steel erection
- » Pipe fabrication and installation
- » Equipment – setting/assembly/alignment
- » Welding (ASME code certified)



- » Large and small construction projects
- » Estimating and budgeting
- » Field work execution
- » Planning and scheduling
- » Project controls
- » Subcontractor management
- » Procurement
- » Cost control
- » R, U, S, and PP Stamp Authorized



**HUNDREDS OF PROJECTS.  
TEN MAJOR MARKETS SERVED.**

- » Pulp and paper
- » Chemical
- » Power generation
- » Mining
- » Food processing
- » General manufacturing
- » Heavy industrial
- » Petrochemical
- » Pharmaceutical
- » Tire manufacturing



**What Can We Do for You?**

PPM, Inc., 1127 South Main Street, Society Hill, SC 29593  
www.morppm.com emcor\_info@emcor.net 843.378.4700